



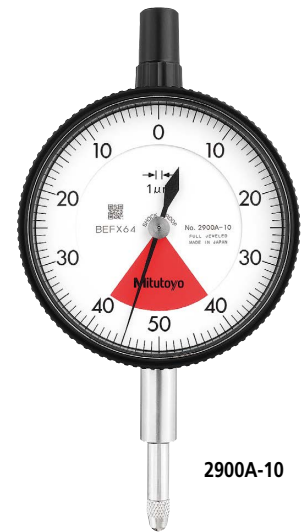
## SERIES 2 — Standard One Revolution Type for Error-free Reading

One revolution type Back Plunger dial gages are also available. (Refer to pages 07-59 to 07-62 for details.)



2990A-10

- The one revolution dial indicator prevents the possibility of reading errors.
- Mitutoyo's unique shock-proof mechanism is incorporated, providing improved resistance to shock due to sudden spindle retraction caused by impact.
- The indicator is highly durable thanks to its oil- and water-tight design, quenched hardened stainless-steel, carbide contact point, and a grand gear made of wear- and deformation-resistant material.
- Application of an anti-reflective and hard surface coating improves scale visibility along with scratch and chemical resistance.
- The red dead zone in the middle of the dial face is separated from the bezel and doesn't cover the graduations. Therefore, users can always see the range where accuracy is not guaranteed even if the bezel is rotated.



2900A-10

## SPECIFICATIONS

Metric		<div><div></div> ISO/JIS type</div>										<div><div></div> ANSI/AGD type</div>	
Code No.		Graduation (mm)	Range (range/rev) (mm)	Maximum permissible error (MPE) (μm)				Hysteresis	Repeat-ability	Dial reading	Measuring force (N)		
w/lug	Flat-back			Indication error			Measuring range						
				1/10 Rev	1/2 Rev	1 Rev							
2928A	2928AB	0.1	4 (5)	20	—	—	40	20	20	2-0-2	1.4 or less		
2929A	2929AB	0.01	0.8 (1)	5	—	—	8	3	3	40-0-40	1.4 or less		
2929A-62	2929AB-62	0.01	0.8 (1)	5	—	—	8	3	3	40-0-40	2.0 or less		
2959A	2959AB	0.01	1.6 (2)	5	—	—	10	3	3	80-0-80	1.4 or less		
2900A-10	2900AB-10	0.001	0.08 (0.1)	2	—	—	3	2	0.5	40-0-40	1.5 or less		
2900A-72	2900AB-72	0.001	0.08 (0.1)	2	—	—	3	2	0.5	40-0-40	2.0 or less		
2901A-10	2901AB-10	0.001	0.16 (0.2)	2	—	—	4	2	0.5	80-0-80	1.5 or less		

Inch															
Code No.		Graduation (in)	Range (range/rev) (in)	Accuracy (in)			Repeat-ability (in)	Dial reading	Measuring force (N)						
w/lug	Flat-back			First 1 Rev/2.5 Rev/10 Rev		Retrace									
2909A-62	2909AB-62	0.0005	0.04/0.05	±0.0005/—/—		0.00016	±0.0001	20-0-20	2.5 or less						
2910A-10	2910AB-10	0.0001	0.008/0.01	±0.0001/—/—		0.0001	±0.00003	4-0-4	1.8 or less						

Note: Completed products inspection is performed in the vertical orientation (contact point downward) and the stated accuracy is guaranteed.

## Special specifications

Upon request, we can manufacture custom types with changed graduation numbers, graduation lines, dead zones, etc. Please contact your local Mitutoyo Sales Office for more information.

SERIES 2 — Standard One Revolution Type for Error-free Reading

DIMENSIONS

ISO/JIS  
Type

Unit: mm

Code No.	A	B	C	D	E	F	G	H	I	Mass (g)	
										w/lug	Flat-back
2928A	47.2	65.2	57	18.1	20	16.9	19.8	52	7.6	145	136
2929A	47.2	65.2	57	18.1	20	16.9	19.8	52	7.6	145	136
2929A-62	47.2	65.2	57	18.1	20	16.9	19.8	52	7.6	145	136
2959A	47.2	65.2	57	18.1	20	16.9	19.8	52	7.6	145	136
2900A-10	47.2	66	57	18.1	20	16.9	20.6	52	7.6	149	140
2900A-72	47.2	66	57	18.1	20	16.9	20.6	52	7.6	149	140
2901A-10	47.2	66.1	57	18.1	20	16.9	20.7	52	7.6	149	140

Note: Refer to pages 07-63 to 07-68 for details of contact points.

ANSI/AGD  
Type

Unit: in

Code No.	A	B	C	D	E	F	G	H	I	Mass (g)	
										w/lug	Flat-back
2909A-62	1.86	2.04	2.24	0.71	3/4	0.54	0.39	2.05	0.30	163	138
2910A-10	1.86	2.02	2.24	0.71	3/4	0.54	0.36	2.05	0.30	164	139

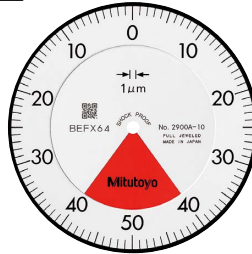
Note: Refer to pages 07-63 to 07-68 for details of contact points.

Optional Accessories

- Limit hand (2 pcs.), Bezel clamp
- Refer to page 07-31 for details.



Balanced scale



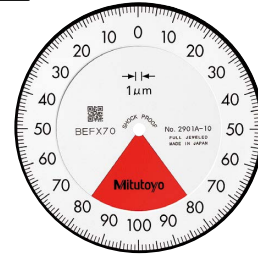
Graduation: 0.001 mm,  
Measuring range: 0.08 mm

**2900A-10**

- One revolution
  - Shockproof
  - Jeweled bearing
- 2900A-72**
- One revolution
  - Shockproof
  - Dustproof
  - Jeweled bearing



Balanced scale



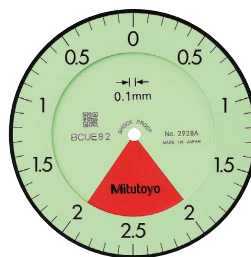
Graduation: 0.001 mm,  
Measuring range: 0.16 mm

**2901A-10**

- One revolution
- Shockproof
- Jeweled bearing



Balanced scale



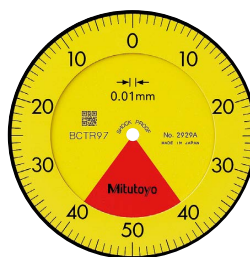
Graduation: 0.1 mm,  
Measuring range: 4 mm

**2928A**

- One revolution
- Shockproof



Balanced scale



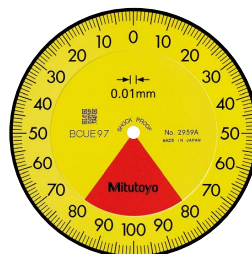
Graduation: 0.01 mm,  
Measuring range: 0.8 mm

**2929A**

- One revolution
  - Shockproof
- 2929A-62**
- One revolution
  - Shockproof
  - Dustproof



Balanced scale



Graduation: 0.01 mm,  
Measuring range: 1.6 mm

**2959A**

- One revolution
- Shockproof

## FEATURES

**Metric** ☐ ISO/JIS type ☐ ANSI/AGD type

Code No.							
w/lug	Flat-back						
<b>2928A</b>	<b>2928AB</b>	✓	✓	✓			
<b>2929A</b>	<b>2929AB</b>	✓	✓	✓			
<b>2929A-62</b>	<b>2929AB-62</b>	✓	✓	✓		✓	
<b>2959A</b>	<b>2959AB</b>	✓	✓	✓			
<b>2900A-10</b>	<b>2900AB-10</b>	✓	✓	✓			✓
<b>2900A-72</b>	<b>2900AB-72</b>	✓	✓	✓		✓	✓
<b>2901A-10</b>	<b>2901AB-10</b>	✓	✓	✓			✓

Code No.							
w/lug	Flat-back						
<b>2909A-62</b>	<b>2909AB-62</b>	✓	✓	✓		✓	
<b>2910A-10</b>	<b>2910AB-10</b>	✓	✓	✓			✓